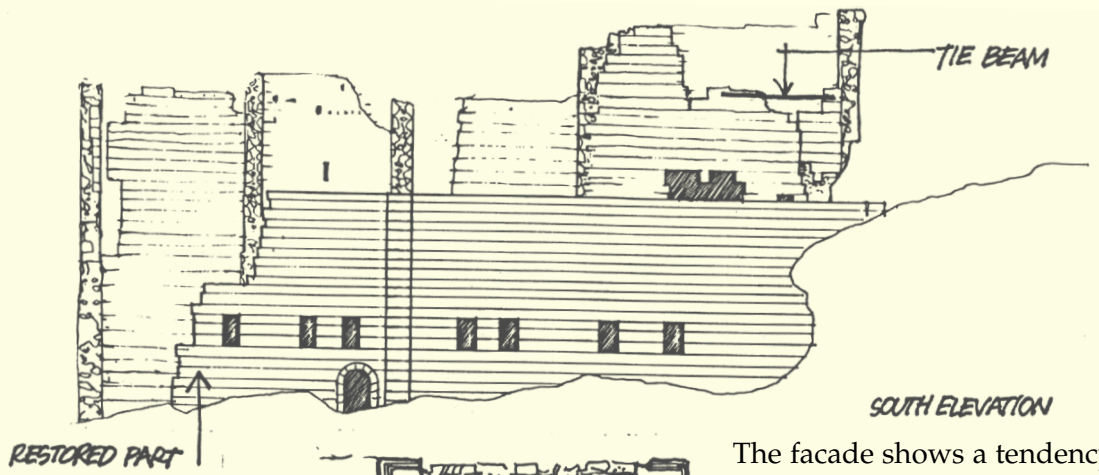
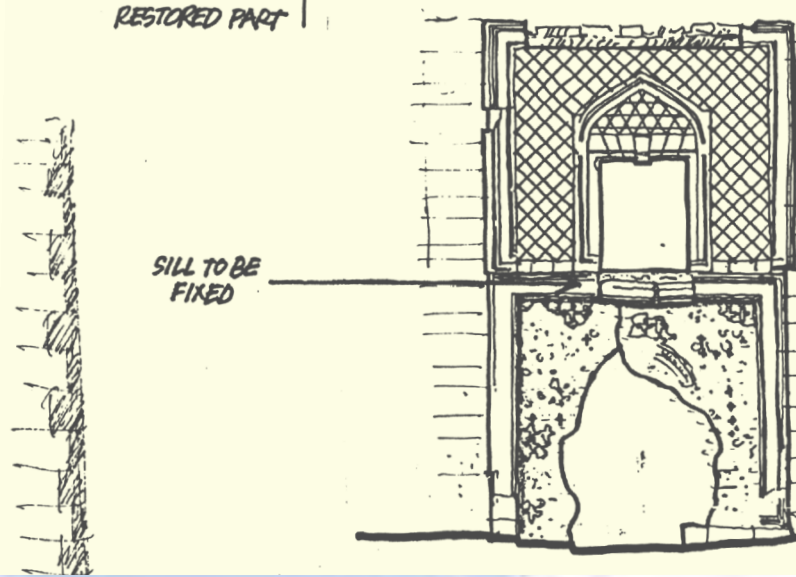


THE GREAT PALACE. Built in the XIIIth century with three storys at the north-western corner of the city, this complex has been heavily restored in recent times. The south-eastern elevation has a beautiful portal which is unfortunately in an advanced state of deterioration. The window sill of the first floor has cracked in the middle and is bound to fall: it has to be taken down, repaired and re-mounted.



SOUTH ELEVATION



The facade shows a tendency to move away from the longitudinal walls, particularly at the south-eastern corner: a tie-rod or a reinforced concrete beam should be inserted on the wall top to tie it back and prevent its overturning. Immediate action should also be taken to prevent the lower levels of the palace from failing because dangerous cracks have formed on walls at this level.

MAIN DOOR

